

Josephine County Integrated Fire Plan

- Background
- Collaboration
- Plan Goals
- Risk Assessment
- Fuels Reduction Priorities
- Community Fuels Reduction Projects

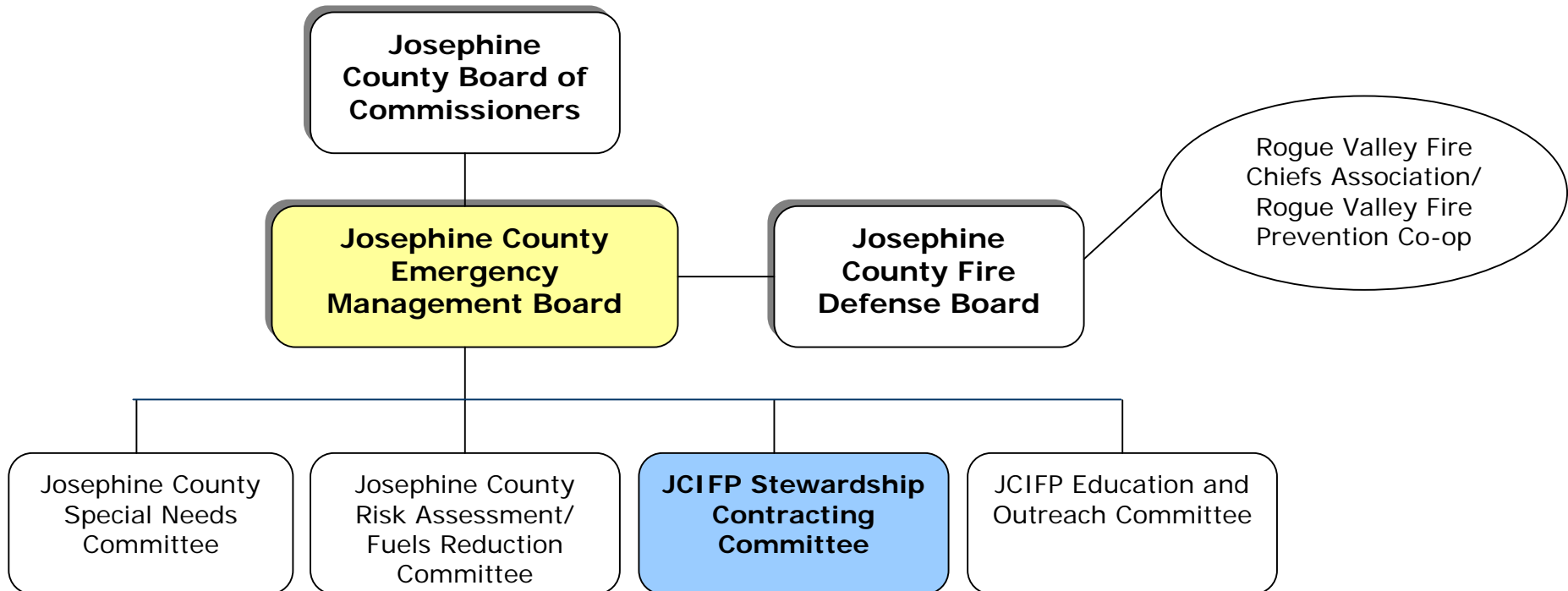


Photo courtesy of the Grants Pass Daily Courier

Background

- 2002 Biscuit Fire
 - Need for multi agency coordination
- August 2003
 - County initiative to develop the plan
- Multi – Objective Planning Goals
 - National Fire Plan
 - Federal Emergency Management Agency Pre-Disaster Mitigation Program
 - Healthy Forest Restoration Act

JCI FP Organizational Chart





Are You Prepared?

Collaboration

- County Fire Agencies
 - Grants Pass, Illinois Valley, Applegate, Williams, Wolf Creek, Rural/Metro
- County Departments
 - GIS, Planning, Emergency Management, Community Development, Forestry, Public Works
- Forest Service
- Bureau of Land Management
- Oregon Department of Forestry
- Oregon Department of Transportation
- Applegate Partnership
- Illinois Valley Community Development Organization
- Siskiyou Field Institute
- Sunny Wolf Community Response Team
- Lomakatsi Restoration Group
- Forestry Action Committee
- The Nature Conservancy
- Josephine County RC&D
- Josephine County Soil and Water Conservation District
- Middle Rogue Watershed Council



Plan Goals

- Landscape treatment
- Coordinate defensible space and fuels reduction projects on public and private land
- Increase access to fuels reduction resources



Photo by Neil Benson, Josephine County Integrated Fire Plan

Plan Goals:

- Help citizens be active participants in protecting homes, communities and quality of life
- Changing the culture in a fire-prone environment



Photos by Neil Benson, JCIFP

Plan Goals:

- Build capacity of all fire protection districts
- Re-connect public education with fire services
- Explore new horizons:
 - Stewardship contracting
 - Biomass utilization



Image Courtesy of the Grants Pass Daily Courier



Risk Assessment

- Josephine County – State Pilot
- National Association of State Foresters Guidance
 - Risk
 - Fire Occurrence
 - Hazard
 - Vegetation, Weather, Topography
 - Values
 - Residential Density
 - Protection Capability
 - Fire Dept. Response Time
 - Structural Vulnerability
 - Access, Roof Type and Defensible Space

Identifying High Risk Areas

- Strategic Planning Units
 - Highest risk areas on public & private land
 - Uses 6th field watersheds
- Fire District Review
 - Invited all fire districts to participate in a review of the risk assessment and 'ground truth' findings

Identifying priorities for treatment – private land

- Review Criteria for Site Selection
 - Risk Assessment (5 layers)
 - Past, current, and future fuels projects (state, federal and county)
 - Community input from meetings
 - Fire District input

Identifying priorities for treatment – public land

- **BLM** – adopted risk assessment in developing priorities for the resource management plan
- **County** – implementing projects adjacent to NFP Projects
 - Lake Selmac
 - Wolf Creek



Are You Prepared?

Community Fuels Reduction Projects

- Action planning worksheet
- Thompson Creek Neighborhood Fuels Reduction project
- 2005 National Fire Plan projects

